

Practical Security and Management in a Service-Oriented Enterprise

Paul Lipton
Sr. Architect, Web Services Team & App Management Group
May 24, 2005
paul.lipton@ca.com

Abstract

Management and security are a common concern today and this session provides the necessary background and perspective on both the business and the technical aspects of both – using mobile technology and other examples to illustrate important points that pertain to the entire enterprise. We will discuss how management and security are the complimentary sides of an essential framework for SOA success, while focusing more on the operations management issues, which are generally less understood today.

How do you comply with service-level agreements and fulfill partner expectations? Are there special issues and challenges when dealing with mobile technology in a Service-Oriented enterprise? We will examine important principles and make concrete recommendations using real-world examples. We will discuss best practices, trends, and the evolution of key Web services and SOA standards as part of a comprehensive introduction to making a successful SOA.


Speaker

Paul Lipton is a Senior Architect in the Web Services and Application Management Team at Computer Associates (CA) and a Strategist in the Office of the CTO. He has been an architect and developer of enterprise systems for over 20 years, and has worked closely with key CA customers to solve important business challenges through the creation of manageable, mission-critical distributed solutions.

Mr. Lipton has represented CA in numerous standards organizations, such as the W3C, OASIS and the Java Community Process, and is currently serving on standards committees involved in the definition of new Web Services standards for management, orchestration, choreography, service state and notification. He is a highly sought-after author and conference speaker, and has shared his knowledge with appreciative audiences on such diverse topics as service-oriented architecture, Web services, Java/J2EE, .NET, management and security, EAI, On-Demand/Grid computing, XML transformation frameworks, databases, distributed systems, and wireless.


The Management Challenge in a Nutshell

Many Enterprises are Mired in the Past



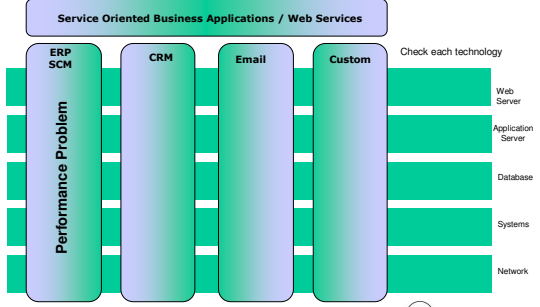
Introduction

- People
 - Operations organized by function or “silo”
 - Users along lines of service
- Technology
 - All events treated equally – increasing complexity
 - Long problem diagnosis cycles
- Process
 - Reactive and dysfunctional
 - Tactical fallback – “buy another product” – manage my function




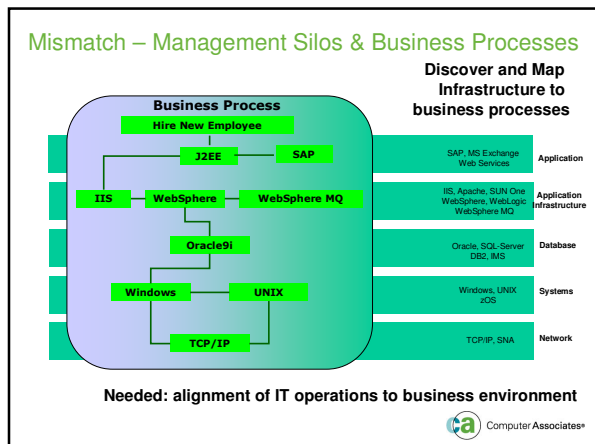
Application Management Today

Horizontal and Vertical “stovepipes”
Users aligned to business processes, IT aligned to technology!



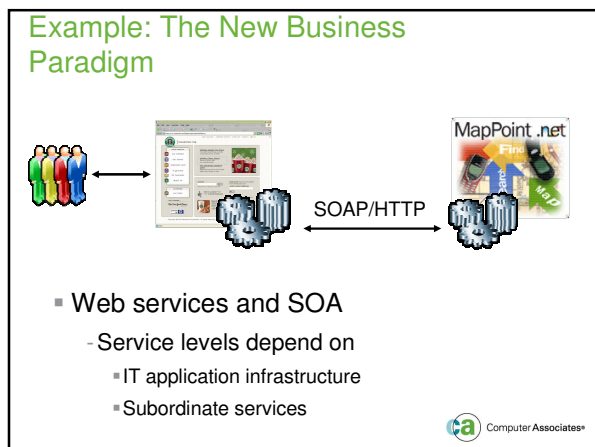
Management by “silo”, reactive, inefficient, costly





SOA Brings New Challenges

It's a New World , but Don't Forget the Elephant



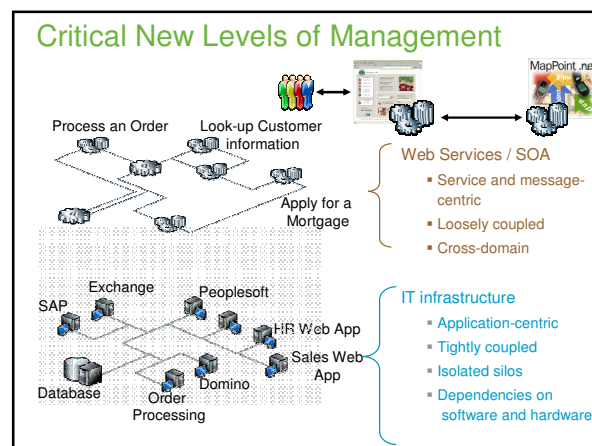
SOA – The Trend Towards Complexity

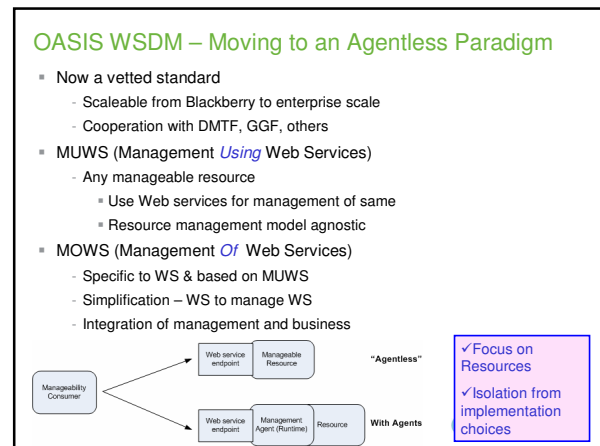
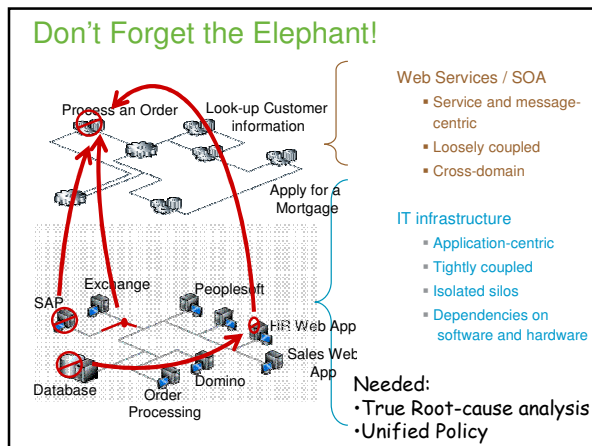
Service-oriented architectures are creating a paradox. They will continue to...

- ...increase the value of services
 - More open
 - More adaptable
 - More opportunities
 - Collaboration
 - Multi-platform
 - Multi-organization
- ...increase the challenges of services
 - Greater complexity
 - Broader scope
 - New layers of technology
 - Uncontrolled proliferation of internal and external services
 - More points of vulnerability
 - Greater exposure...

Business Exposure Issues

- Meeting commitments with customers, partners, suppliers, regulators, and more
 - Responsiveness and agility (Service Level Agreements – SLA)
 - Are you meeting their expectations?
 - Are they meeting your expectations?
 - Dependability (Quality of Service – QoS)
 - Any lost transactions?
 - Problems occurring? What service?
 - Is the underlying IT infrastructure part of the problem? If so, what?
 - Control/visibility
 - Audit trail?
 - Proactive vs. reactive: can you predict/forecast?
 - Security
 - Regulatory, legal, strategic, privacy, and other





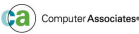
Resources


CA Web services white papers and product information
<http://www.ca.com/webservices>

OASIS WSDM Standard
http://www.oasis-open.org/committees/tc_home.php?wg_abbrev=wsdm

Web Services Journal, August 2004
 "In a Service-Oriented Architecture, Who Will Do the Cooking?"
<http://www.sys-con.com/story/?storyid=45781&DE=1>

Web Services Journal, March 2004
 "Snow White's FIRST Web Services (a cautionary fable for IT management)"
<http://www.sys-con.com/story/?storyid=43956&DE=1>

XML Journal, March 2005
 Accessing Resources: New Web Service Application Patterns for a Service-Oriented World
<http://www.sys-con.com/story/?storyid=48757&DE=1> 



Computer Associates®

Practical Security and Management in a Service-Oriented Enterprise

Paul Lipton
 Sr. Architect, Web Services Team & App Management Group
 May 24, 2005
paul.lipton@ca.com