


Above All
SOFTWARE

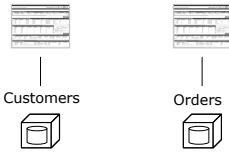
Breaking Down the Silo Walls
Realizing the Vision of SOA

Roger Sippl, Founder and Chairman
May 24, 2005



The History of Silos

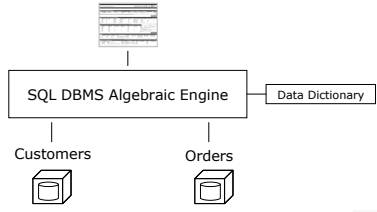
- The File and the Program
 - Often just one program for each file
 - “Composite Applications” dealt with more than one



Copyright 2003 Above All Software, Inc. Above All SOFTWARE

The History of Silos

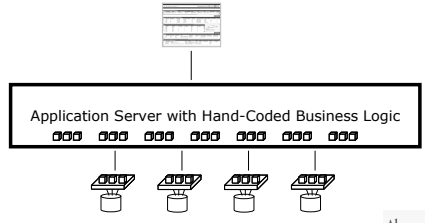
- Databases break down the “file silo” walls
- SQL – A revolution in enterprise computing



Copyright 2003 Above All Software, Inc. Above All SOFTWARE

The History of Silos

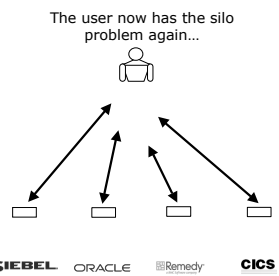
- Application Servers
 - Three tier architecture



Copyright 2003 Above All Software, Inc. Above All SOFTWARE

The History of Silos

The user now has the silo problem again...



SIEBEL **ORACLE** **Remedy** **CICS**

Copyright 2003 Above All Software, Inc. Above All SOFTWARE

The Beginnings of a Solution

- Distributed object computing
 - Remote procedure calls
 - CORBA
 - DCOM
- All Pre-cursors to SOA

Copyright 2003 Above All Software, Inc. Above All SOFTWARE

The Beginnings of a Solution

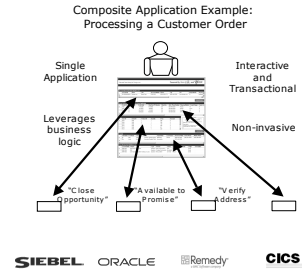
- SOA
 - Web services – A logical approach for creating services
 - Microsoft, BEA, SAP & IBM endorsed
 - The basic language enabling the solution...which is...

Copyright 2003 Above All Software, Inc.



Composite Applications

- Combines business functionality from multiple applications
- A form of integration
- A form of application development
- Supports many different styles of integration
 - End-user
 - Real-time Process
 - Batch
- How one derives value from an SOA

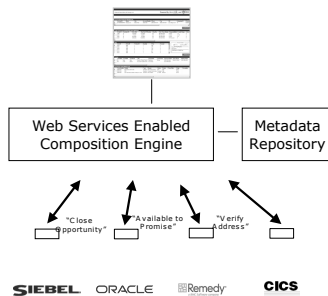


Copyright 2003 Above All Software, Inc.



Composite Application Architecture

- Metadata-driven
- Algebraic Composition Engine
- Provides joins, merges, structural remodeling and semantic leveling



Copyright 2003 Above All Software, Inc.



Lessons from the Past

- "SQL" for Services
 - Collect information (meta data) about the little software robots
 - Develop algebraic manipulations for them

"It's commonly believed in the software industry that composite applications will become the primary means by which corporate users will interact with a company's business processes."

-- CRN Magazine

Copyright 2003 Above All Software, Inc.



Modeling Up!

- We're not quite there yet
 - A gap to assembling and executing new applications and processes from "software robots"
 - Must solve semantic interoperability

Copyright 2003 Above All Software, Inc.



Services Modeling and Relationships

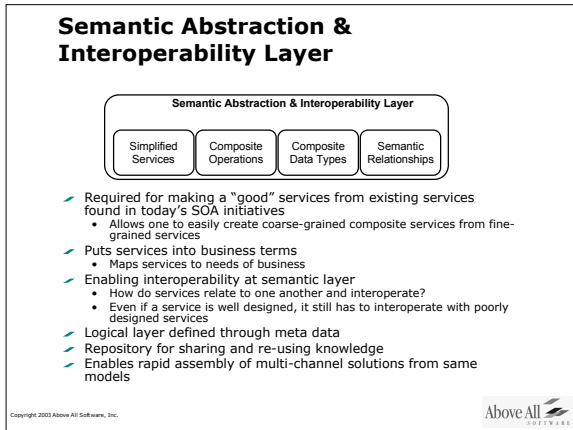
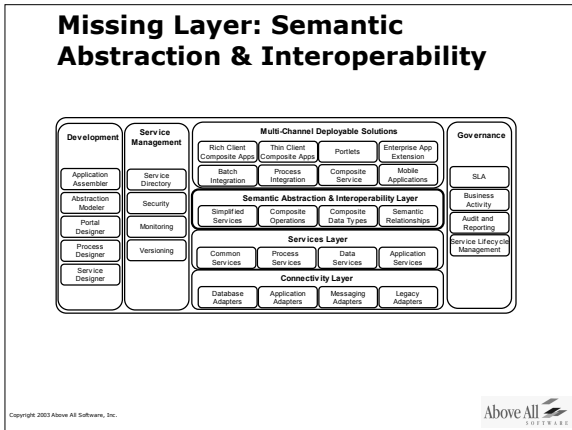
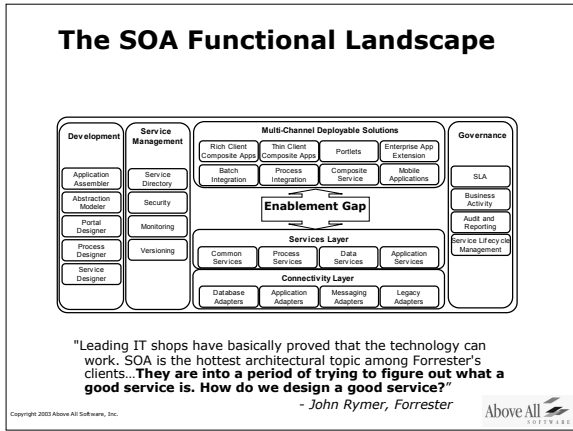
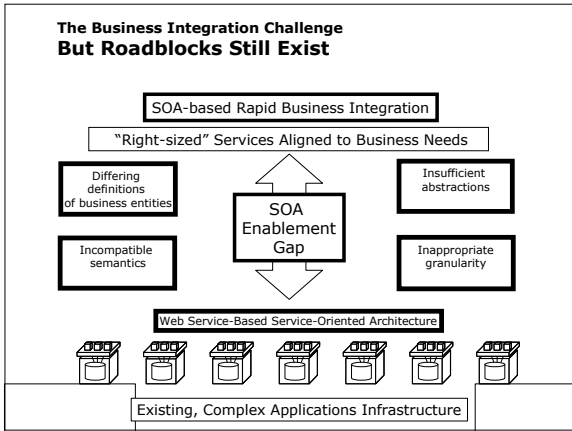
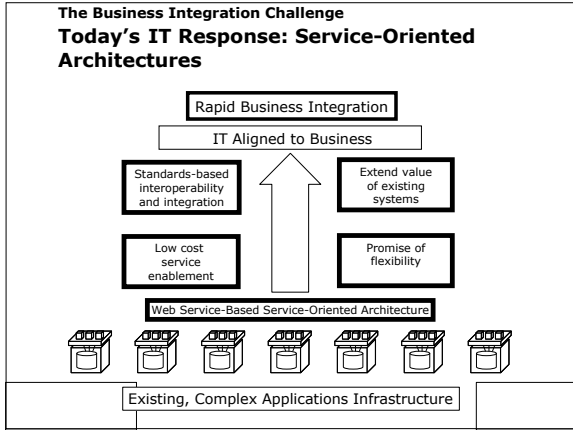
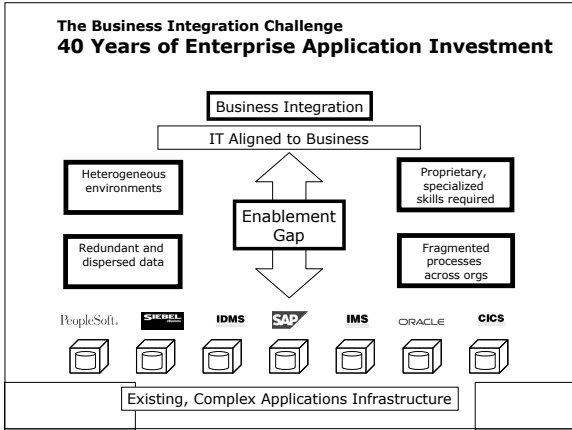
- What's needed
 - Understanding what business functionality exists inside our silos
 - A way to create 'good' services
 - Developers to refine Web and other services and make accessible for reuse.
 - Establish semantic interoperability
 - Tools to assemble new applications and services
 - Without programming
 - Using algebraic operations to assemble components
 - Executing real-time instances of data and transactions

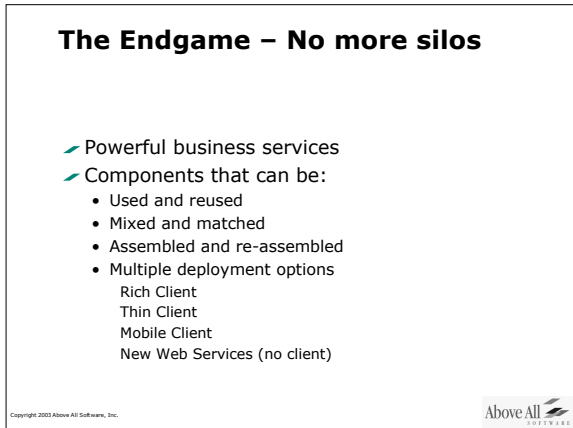
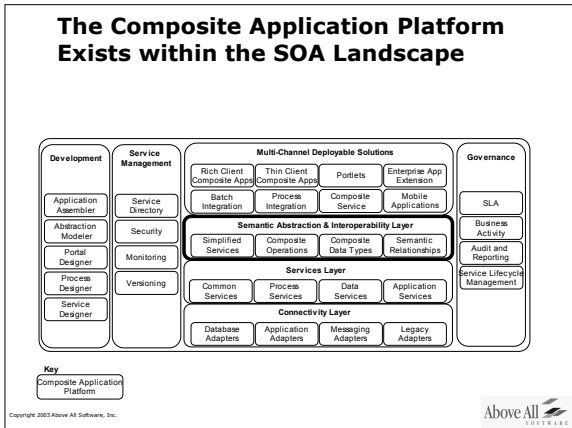
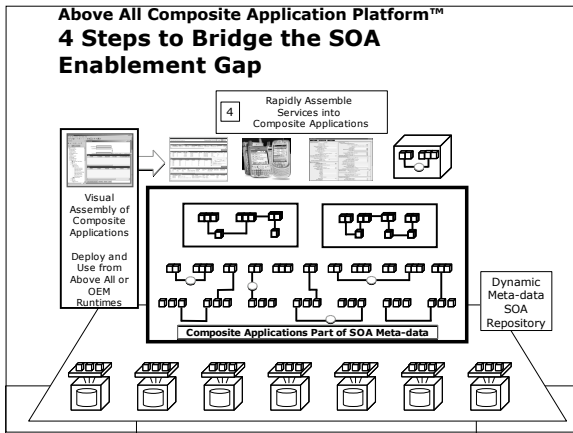
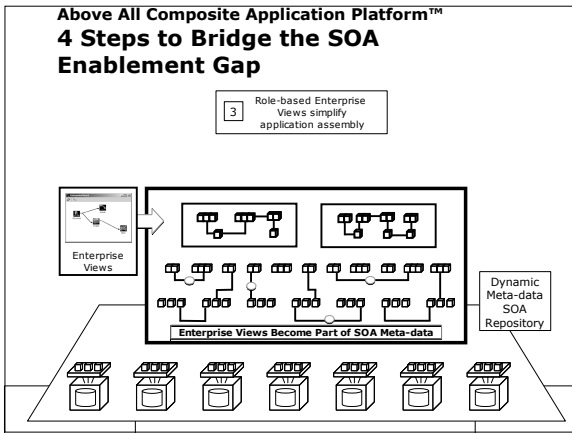
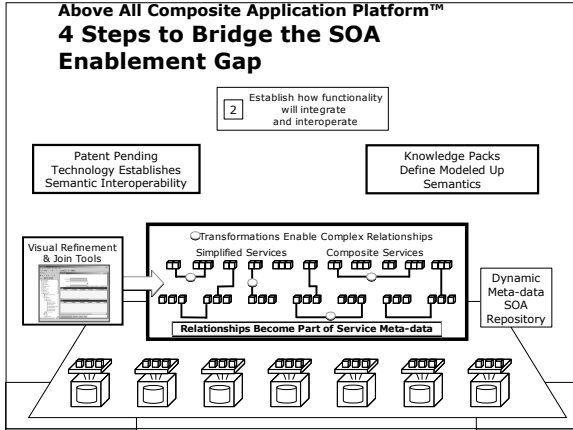
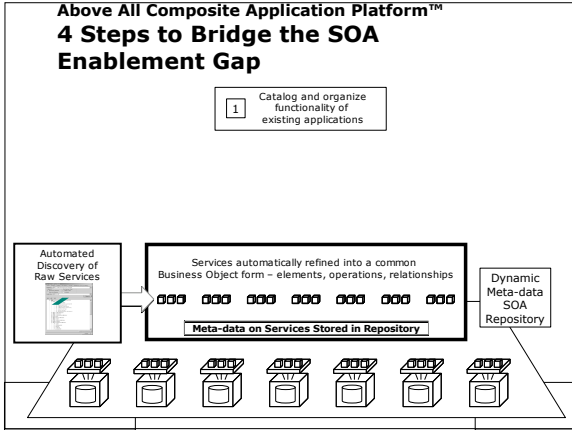
Copyright 2003 Above All Software, Inc.



Roger Sippl

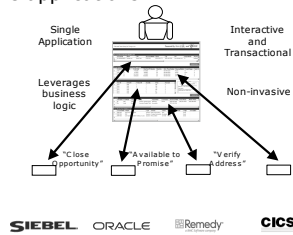
Enterprise Architect
Summit 2005





Silos Walls Broken Down Forever

Result: New agile applications



Copyright 2003 Above All Software, Inc.

Above All
SOFTWARE

Above All
SOFTWARE

Breaking Down the Silo Walls *Realizing the Vision of SOA*

Roger Sippl, Founder and Chairman
May 24, 2005



Roger Sippl

Enterprise Architect
Summit 2005