

Leveraging the Federal Enterprise Architecture to Derive Technology Efficiencies

May 23rd, 2005

Andy Norris

Vice President – Federal Practice



Agenda

- A Quick Definition
- Legislative review
- The latest from OMB
- FEATT Methodology
- The Results

Establishing the Vernacular

- For the purpose of this presentation a Service Component, of which there are 158 within the FEA SRM, will also be called a "Capability".

"Capabilities are defined as those services, including specific applications, provided by an IS department to the rest of the company to enable them to conduct business. Capabilities include, but are not limited to, such things as e-mail, collaboration, document storage, automated workflow and routing, analysis and reporting, printing et cetera."

The Issue...Legislation

- Office of Management and Budget (OMB) Circular A-130 states;
 - "Agencies must use a Framework to guide the description of their architecture"
 - "Agencies must include specific items in their architecture description"
- OMB Circular A-11 states that;
 - "Agency capital planning must be related to their architecture"
- Clinger-Cohen Act says;
 - "All Departments must have an architecture"

What does OMB want to see?

- Evidence of:
 - EA Put Into Action for Tangible Results
 - Proactive IT Portfolio Management
 - Leverage the most from Legacy or Existing IT Investment
 - Closer alignment of IT assets to the Agency Mission they support
 - Collaboration and cooperation intra and inter agency

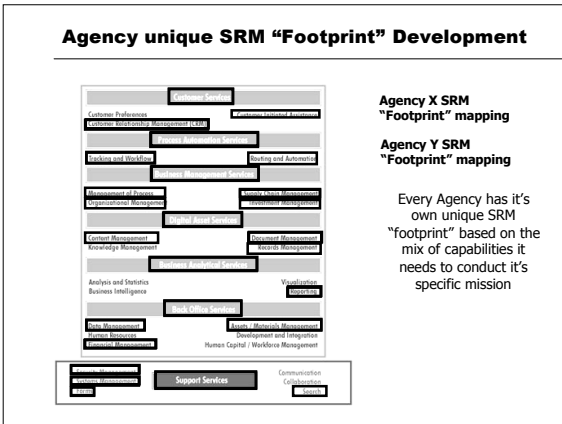
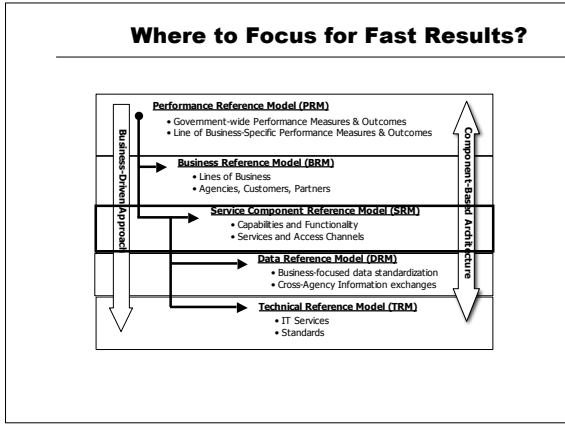
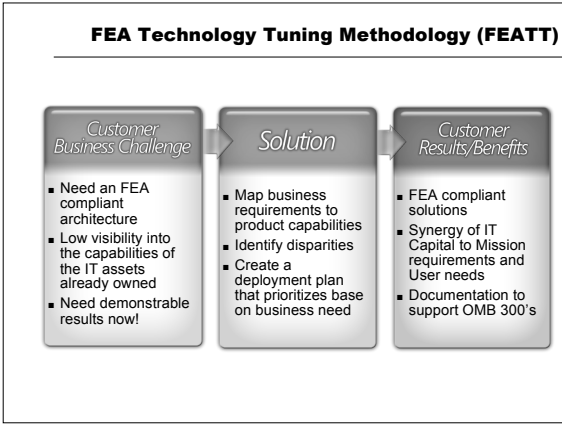


"Enabling Citizen-Centered Electronic Government 2005 - 2006 FEA PMO Action Plan"
March 2005

How do you accurately align the Technology you already own to:

- ☞ Best support your Agency or Program Office mission
- ☞ Facilitate the most Efficient and Effective use of Legacy Assets
- ☞ Demonstrate compliance with the letter and intent of the Federal Enterprise Architecture (FEA)?

And...
See Results Fast?!?



- ### The Stages of the FEATT Methodology I
- Understand what capabilities you need
 - Ideally comes from BRM Process Mappings BUT is easily and quickly done without any BRM work in place
 - Identify the Agency or Program office unique SRM "footprint"
 - Determine what you own
 - Software inventory
 - Hardware inventory
 - Determine what IT can do
 - Most COTS software is now capability rich and tailor-able
 - COTS increasingly support standardized interfaces so can be coupled together to provide further capabilities
 - Engage vendors and leverage your existing contractors

- ### The Stages of the FEATT Methodology II
- Determine what IT is currently doing
 - Review the *actual* implementation of what you own
 - Enter the Matrix
 - Matrix the technologies you own on axis X against the service components (capabilities) from the SRM on the Y axis that they support
 - Matrix the technologies you have deployed on axis X against the *actual* service components (capabilities) they are currently supporting on the Y axis
 - Spot the Difference
 - Focused Gap analysis
 - Prioritized Alignment Action Plan

Based on:
 Identified Business Need
 Deployment Costing
 Internal Strategic Imperatives

- ### The Results
- SRM Footprint Mapping
 - Analysis of IT deployable solutions and mapping to the SRM
 - Analysis of deployed IT solutions and mapping to the SRM
 - Gap analysis highlighting unsupported or sub-optimized service components in which IT is misaligned
 - Structured, Prioritized Plan of Projects to address, through deployment, the misalignment of existing IT assets.

Example Matrix

The image shows a complex matrix table with multiple columns and rows. The table is mostly blacked out or contains illegible text, but it appears to be a project plan or resource allocation matrix. The columns likely represent different project phases or tasks, and the rows represent different resources or team members. The table is titled 'Microsoft Servers, Clients and Desktop Tools'.

Time Scale and Resources

- Right Expertise more Important than number of Staff
- Low Touch
- Interview/Analysis Access Required to/from:
 - Principal Assessment Owner
 - CIO or Designated Equivalent (s)
 - Technical Resources for in-scope areas
 - Deployed Systems
- Can be completed in less than 6 weeks

Contact Info

Andy Norris
Vice President – Federal Practice
E-mail: ANorris@Go-Planet.com
Phone: 301-721-0100 Ext 105